

* NOTE : DIMENSIONS & AREAS ARE APPROXIMATE ONLY



NORTH

GROUND FLOOR PLAN

233 PACIFIC HIGHWAY
NORTH SYDNEY

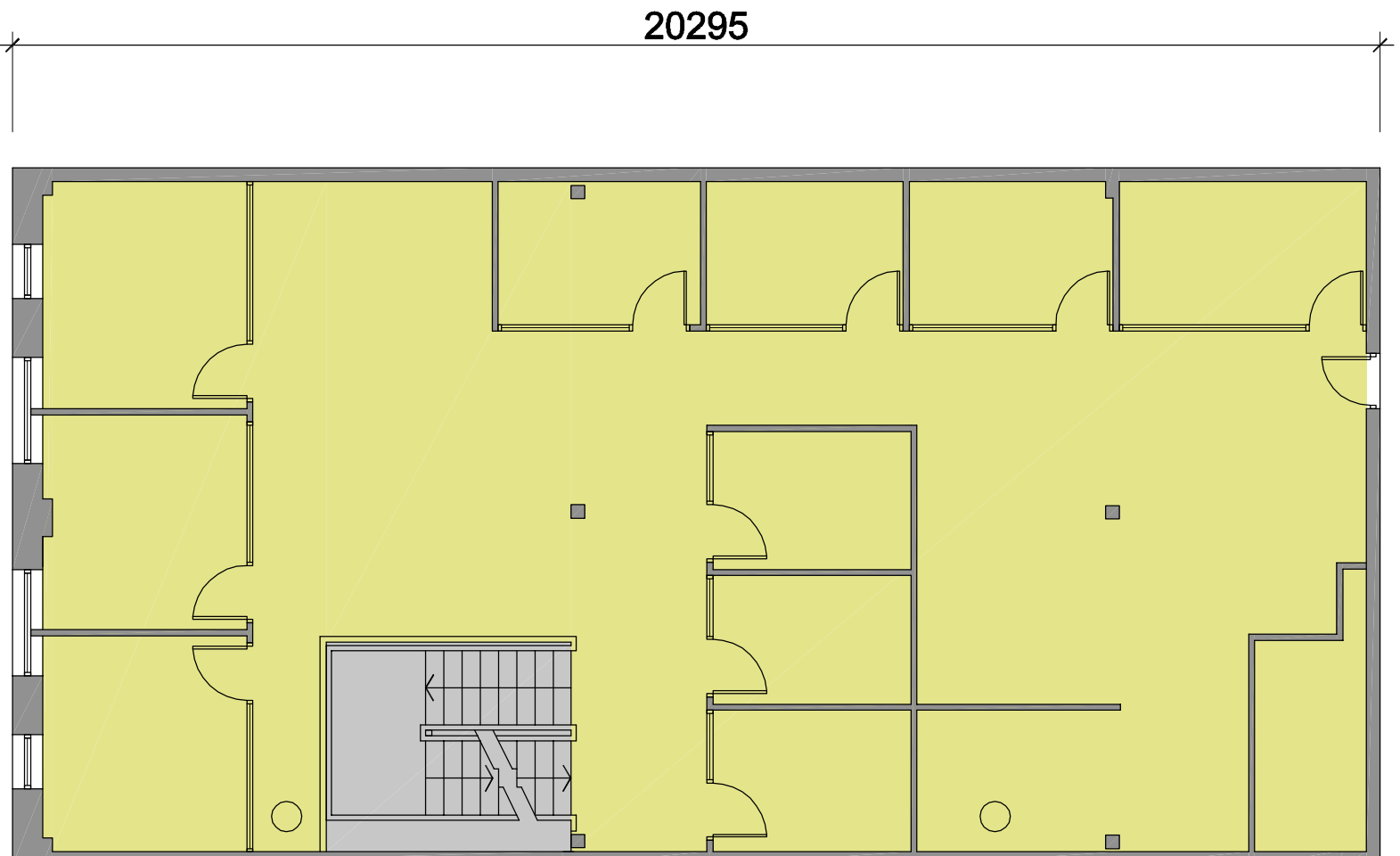
11 APRIL 2007

0 5 metres

NOTE :
THIS COMMON AREA TO BE
ADDED PROPORTIONALLY
TO EACH TENANT

FORD LAND
COMPANY PTY LTD

231 PACIFIC HIGHWAY, NORTH SYDNEY NSW 2060
T : (02) 9957 6355
F : (02) 9922 6702
e : info@fordland.com.au
www.fordland.com.au



NORTH

* NOTE : DIMENSIONS & AREAS ARE APPROXIMATE ONLY

FIRST FLOOR PLAN

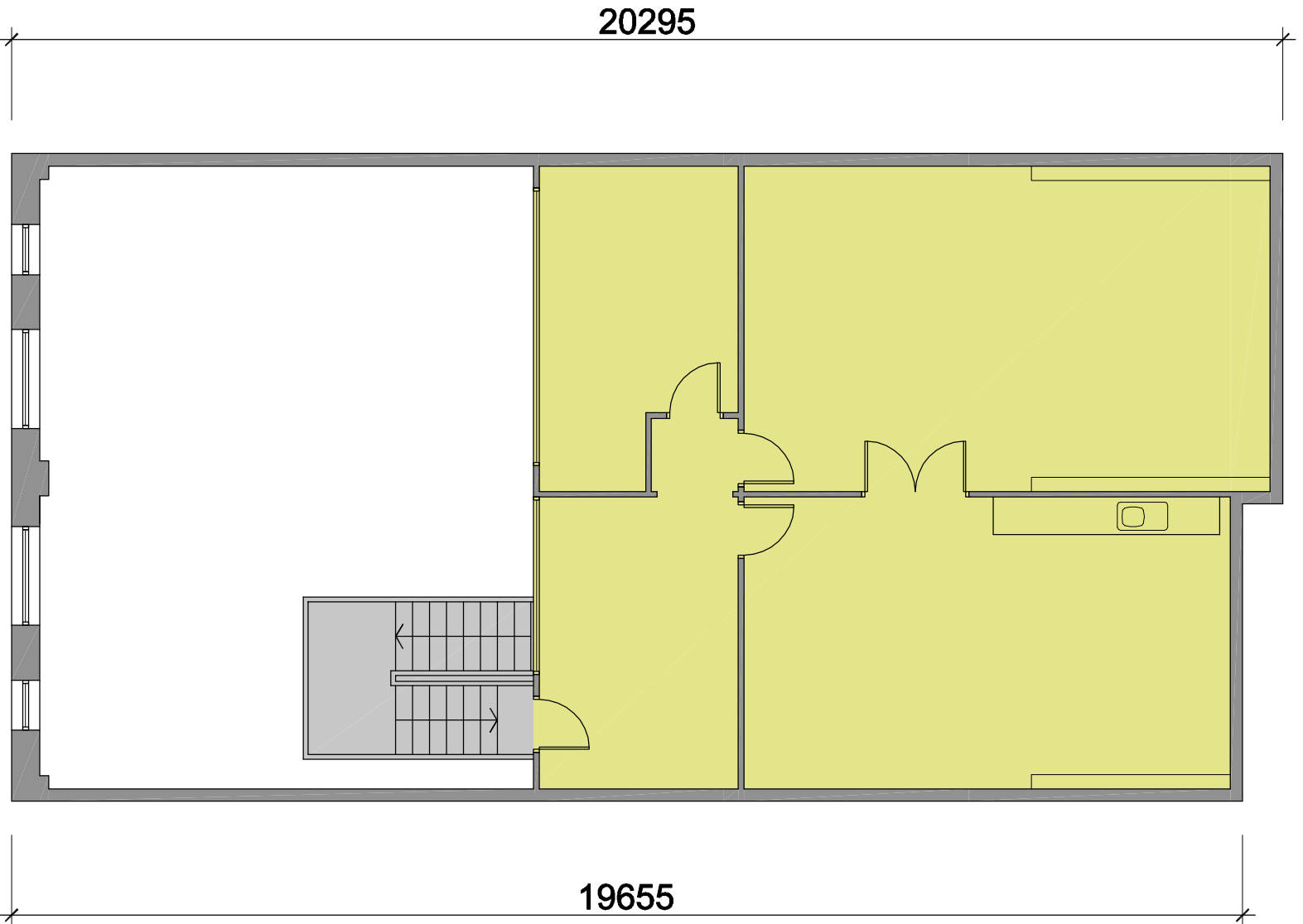
233 PACIFIC HIGHWAY
NORTH SYDNEY

AREA - 195 m² (APPROX.)

0 5 metres

FORD LAND
COMPANY PTY LTD

231 PACIFIC HIGHWAY, NORTH SYDNEY NSW 2060
T : (02) 9957 6355
F : (02) 9922 6702
e : info@fordland.com.au
www.fordland.com.au



NORTH

* NOTE : DIMENSIONS & AREAS ARE APPROXIMATE ONLY

SECOND FLOOR PLAN

233 PACIFIC HIGHWAY
NORTH SYDNEY

AREA - 102 m² (APPROX.)



FORD LAND
COMPANY PTY LTD

231 PACIFIC HIGHWAY, NORTH SYDNEY NSW 2060
 T : (02) 9957 6355
 F : (02) 9922 6702
 e : info@fordland.com.au
www.fordland.com.au